

**SCM 2CO P****Weidmüller Interface GmbH & Co. KG**

Klingenbergstraße 26

D-32758 Detmold

Germany

www.weidmueller.com

**Product image**

Relay sockets for the D-SERIES DRM relays

- 2 and 4 CO contacts
- Screw and PUSH IN connection
- Standard and low heights

**General ordering data**

Version	D-SERIES DRM, Relay bases, Number of contacts: 2, CO contact, Continuous current: 12 A, PUSH IN
Order No.	<a href="#">7760056362</a>
Type	SCM 2CO P
GTIN (EAN)	6944169772269
Qty.	10 pc(s).

Creation date April 10, 2021 12:52:05 PM CEST

Catalogue status 12.03.2021 / We reserve the right to make technical changes.

## SCM 2CO P

Weidmüller Interface GmbH &amp; Co. KG

Klingenbergstraße 26

D-32758 Detmold

Germany

www.weidmueller.com

## Technical data

## Dimensions and weights

Depth	42.7 mm	Depth (inches)	1.681 inch
Height	101.8 mm	Height (inches)	4.008 inch
Net weight	65.2 g	Width	30.6 mm
Width (inches)	1.205 inch		

## Temperatures

Storage temperature	-40 °C...85 °C	Operating temperature	-40 °C...55 °C
Humidity	5...85 %, no condensation		

## Environmental Product Compliance

REACH SVHC	Lead 7439-92-1
------------	----------------

## Rated data UL

Certificate No. (cURus)	E355547
-------------------------	---------

## Load side

Continuous current	12 A	Max. switching voltage, AC	250 V
Rated switching voltage	250 V AC		

## Contact data

Contact type	2 CO contact
--------------	--------------

## General data

Rail	TS 35	
Colour	black	
UL94 flammability rating component	Component	Retaining clip
	UL94 flammability rating	HB
	Component	Mounting foot
	UL94 flammability rating	HB
	Component	Pusher
	UL94 flammability rating	HB
Component	Housing	
	UL94 flammability rating	
	V-2	

## Insulation coordination

Creepage and clearance distance input – output	≥ 3 mm	Dielectric strength of neighbouring contacts	2.5 kV <sub>eff</sub> / 1 Min.
Dielectric strength of open contact	2.5 kV <sub>eff</sub> / 1 Min.	Dielectric strength, Input/Output	4 kV <sub>eff</sub> / 1 min
Impulse withstand voltage at input and output	4.8 kV (1.2/50 μs)	Impulse withstand voltage at neighbouring contacts	4.8 kV (1.2/50 μs)
Insulating material group	IIIb	Pollution severity	2
Protection degree	IP20	Rated voltage	300 V
Surge voltage category	III		

## Further details of approvals / standards

Certificate No. (cURus)	E355547
-------------------------	---------

Creation date April 10, 2021 12:52:05 PM CEST

Catalogue status 12.03.2021 / We reserve the right to make technical changes.

2

## SCM 2CO P

Weidmüller Interface GmbH &amp; Co. KG

Klingenbergstraße 26

D-32758 Detmold

Germany

www.weidmueller.com

## Technical data

## Connection data

Wire connection method	PUSH IN	Stripping length, rated connection	10 mm
Clamping range, rated connection	1.5 mm <sup>2</sup>	Clamping range, min.	0.14 mm <sup>2</sup>
Clamping range, max.	1.5 mm <sup>2</sup>	Wire connection cross section AWG, min.	AWG 26
Wire connection cross section AWG, max.	AWG 16	Wire cross-section, solid, min.	0.14 mm <sup>2</sup>
Wire cross-section, solid, max.	1.5 mm <sup>2</sup>	Wire connection cross section, finely stranded, min.	0.14 mm <sup>2</sup>
Wire connection cross section, finely stranded, max.	1.5 mm <sup>2</sup>	Wire connection cross-section, finely stranded with wire-end ferrules DIN 46228/4, min.	0.14 mm <sup>2</sup>
Wire connection cross-section, finely stranded with wire-end ferrules DIN 46228/4, max.	1 mm <sup>2</sup>	Conductor cross-section, flexible, AEH (DIN 46228-1), min.	0.14 mm <sup>2</sup>
Conductor cross-section, flexible, AEH (DIN 46228-1), max.	1.5 mm <sup>2</sup>	Blade size	0.4 x 2.5 mm

## Classifications

ETIM 6.0	EC001456	ETIM 7.0	EC001456
ECLASS 9.0	27-37-16-03	ECLASS 9.1	27-37-16-03
ECLASS 10.0	27-37-16-03	ECLASS 11.0	27-37-16-03

## Important note

Product information Only connection A2 with the cross-connection SCM/SDI P CC (art. no. 7760056366) can be bridged on this socket.

## Approvals

Approvals



ROHS	Conform
UL File Number Search	E355547

## Downloads

Approval/Certificate/Document of Conformity	<a href="#">EU Konformitätserklärung / EU Declaration of Conformity</a>
Engineering Data	<a href="#">STEP</a>
Engineering Data	<a href="#">EPLAN</a>

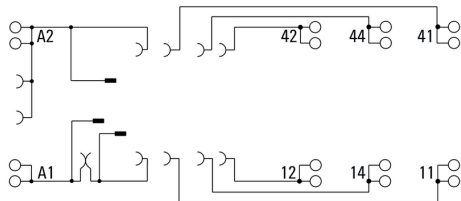
**SCM 2CO P**

**Weidmüller Interface GmbH & Co. KG**  
 Klingenbergstraße 26  
 D-32758 Detmold  
 Germany

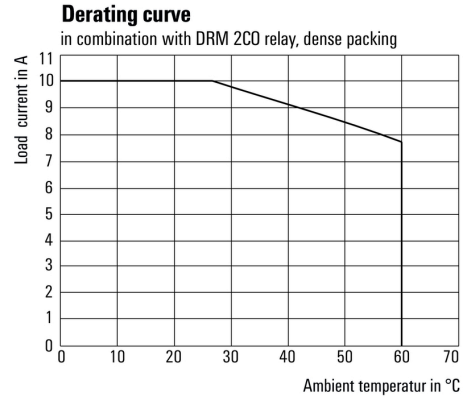
www.weidmueller.com

**Drawings**

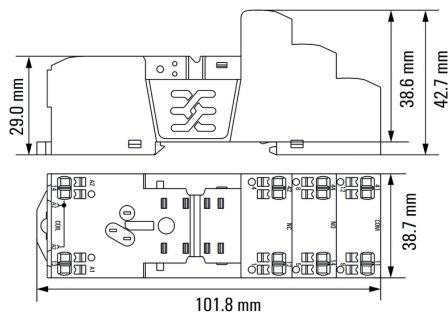
**Wiring diagram**



**Graph**



**Dimensional drawing**

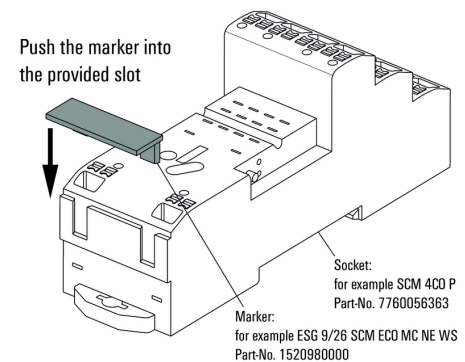


**Example of use**

**Derating curve**  
 In combination with DRM 2CO relay, dense packing  
 relays fitted closely side by side

**How to install marker**

on PUSH IN connection sockets (one slot available)



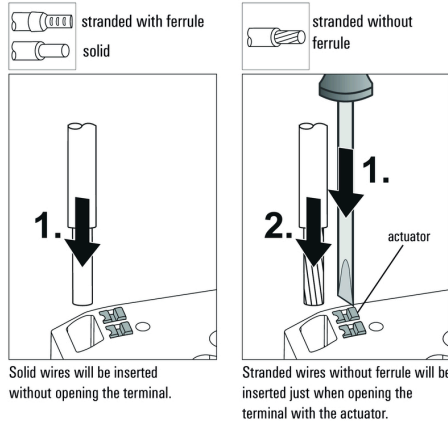
**How to install marker**

on PUSH IN connection sockets (one slot available)

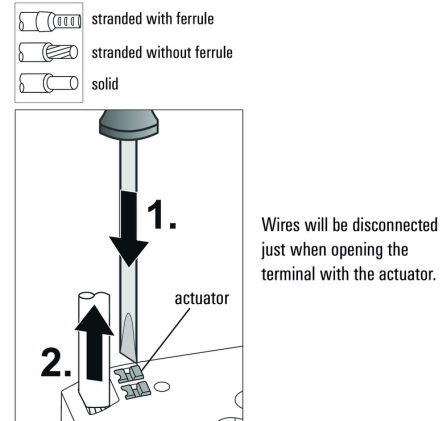
**Miscellaneous**

**Miscellaneous**

**Insert flexible and solid cables**



**Removal of cables**



**SCM 2CO P**

**Weidmüller Interface GmbH & Co. KG**  
Klingenbergstraße 26  
D-32758 Detmold  
Germany

**Drawings**

[www.weidmueller.com](http://www.weidmueller.com)

**Miscellaneous**

**Recommended screwdriver**

to push the actuator in **PUSH IN**

