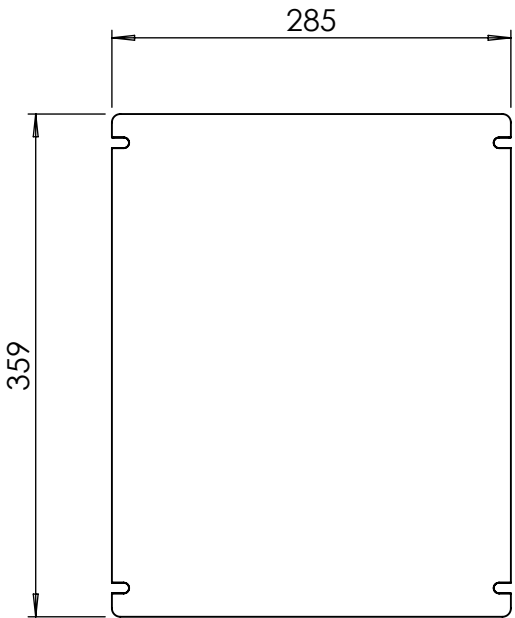
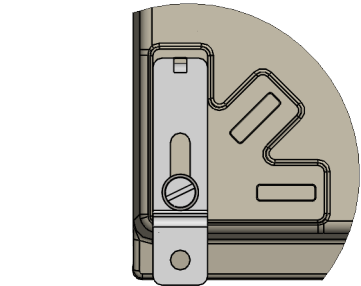


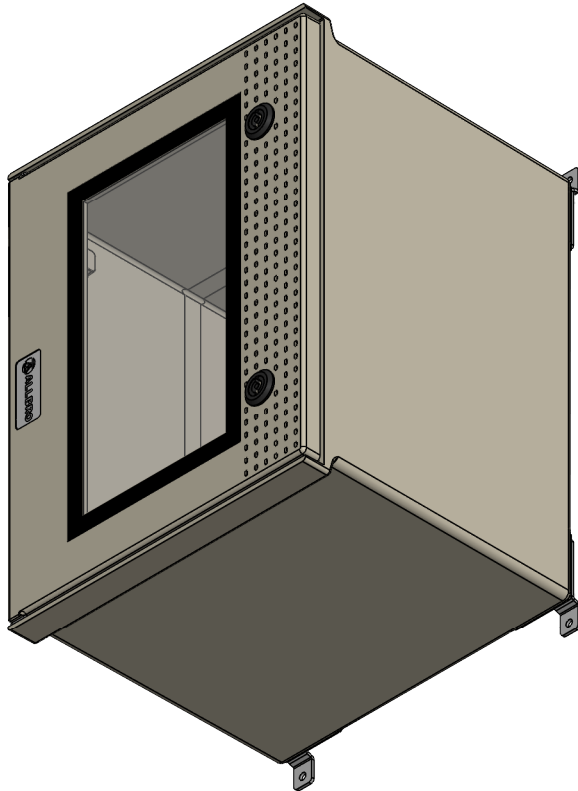
DEVICE PLATE



- ALLBROX No4D**
- Internal S/S hinges.
 - External adjustable mounting bracket, horizontal, vertical or 45° angles.
 - Mounting bracket are S/S.
 - DIN rail mount with M6 Bolt & Nut.
 - The height of the DIN rail is easily adjustable.
 - Easy removable lid.
 - Device plate are available on request in S/S or SMC
 - Material Lid & Base: SMC
 - Internal Dimensions: HxWxD 364x290x267 (mm)
 - IP 66.



External adjustable mounting bracket, horizontal, vertical or 45° angles.



								ALL INFORMATION CONTAINED ON THIS DWG. IS THE EXCLUSIVE COPYRIGHT OF ALLBRO INDUSTRIES AND SUCH INFORMATION SHALL NOT BE COPIED OR REPRODUCED WITHOUT PERMISSION	
						P.O. BOX 6699, DUNSWART, 1508		TITLE:	
						SHEET 1 OF 1	DRAWN BY. A.DE WAAL	DATE 27/06/2019	ALLBROX NO.4 DEEP
						A3	CHECKED BY.	DATE	
						APPROVED BY.		DATE	ALL-004/D
0	FIRST ISSUE	A.D.W.	27/06/19						
REV No	MODS. DESCRIPTION	MODS. BY	DATE	CHECKED BY	APPROVED BY			BOM No:	REV:
									0