

Distributed by **TROPAC**

telergon
gorlan



S5 Series AC Switch-Disconnectors

www.telergon.com



gorlan

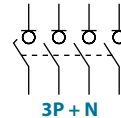
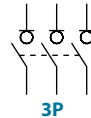
S5 AC Switch - disconnecter base mounting 2P - 3P - 3P+N

Size 00

A 40|63|80



	CODE-40A	CODE-63A	CODE-80A
2P	S5-00402PB0	S5-00632PB0	S5-00802PB0
3P	S5-00403PB0	S5-00633PB0	S5-00803PB0
3P + N	S5-00403NB0	S5-00633NB0	S5-00803NB0



Technical information



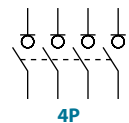
tests:



According to IEC 60947-3

				40	63	80
Rated thermal current in ambient at	Ith	40 °C	A	50	63	80
		50 °C	A	50	63	80
		60 °C	A	40	63	64
Rated insulation voltage	Ui	V	800	800	800	
Rated impulse withstand voltage	Uimp	kV	8	8	8	
AC rated operational current ^{*(1)} (Rated operational frequency 50/60 Hz)	Ie	Ue 400V AC21A	A	50	63	80
		Ue 400V AC22A	A	50	63	63
		Ue 400V AC23A	A	50	50	50
Rated breaking capacity	400V AC23	A	400	400	400	
Rated making capacity	400V AC23	A	500	500	500	

				40	63	80
Short - circuit behaviour						
Rated short-circuit making capacity ^{*(2)}	Icm	kA (peak)		5	5	5
Rated short-time withstand current (1sec.)	Icw	kA rms		3	3	3
Mechanical features						
Number of mechanical operations (according to the standards, for other values please consult)	Cycles			10000	10000	10000
Maximum weight	Kg			0,4	0,4	0,4



Also available 4P switch - disconnectors under request, please consult

^{*(1)} Other voltages and / or utilization categories. Please consult

^{*(2)} Without limiting protective device (short-circuit maintained 50... 100 ms.)

Accessories



» Direct handle

CODE DS-SI01



» External handle included shaft^{*(e1)}

IP65
CODE DS-SA01



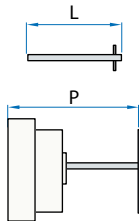
» External handle without shaft

IP65
CODE DS-SA03



» Emergency external handle included shaft^{*(e1)}

IP65
CODE DS-SR01



» Shafts

Standard shaft included^{*(e1)}

L (mm)	P (mm)
177	85... 195,5

Shaft extensions

Type 1

L (mm)	P (mm)	CODE
250	85... 278	DS-EP04

Type 2

L (mm)	P (mm)	CODE
387	85... 415	DS-EP05



» Auxiliary contacts

1NO+1NC CODE D5LAU01
2NO+2NC CODE D5LAU02

I_e = 16 A (resistive loads)
4 A (inductive loads) at 250 Vac.

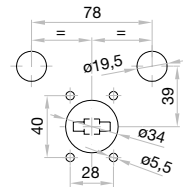
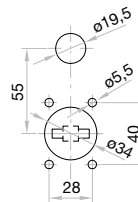


» Safety key lock device

Simple CODE DS-CAB1
Double CODE DS-CEB1

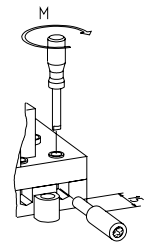
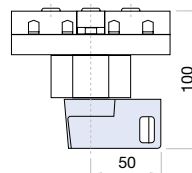
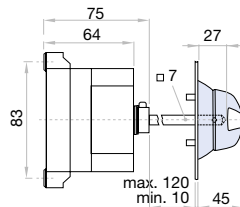
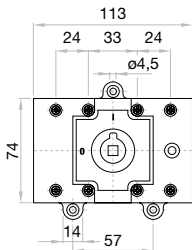
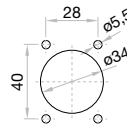
For external handle, lock the handle by means of a key in position "OFF" (under request, in "ON"), the key can only be removed with the handle locked

Door drilling for handle and key lock device
Simple Double



Dimensions (mm)

Door drilling for external handle



S max (Cu)	M
mm ²	Nxm
25	2

S5 AC Switch - disconnecter base mounting 2P - 3P - 3P+N

Size 0

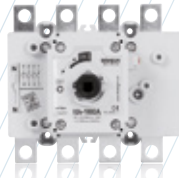
A 125|160|200|250



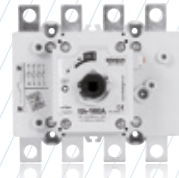
CODE-125A



CODE-160A



CODE-125A



CODE-160A

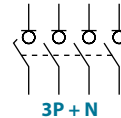
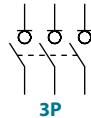


CODE-200A



CODE-250A

2P	S5-01252PB0	S5-01602PB0	S5-01252PS0	S5-01602PS0	S5-02002PS0	S5-02502PD0
3P	S5-01253PB0	S5-01603PB0	S5-01253PS0	S5-01603PS0	S5-02003PS0	S5-02503PD0
3P + N	S5-01253NB0	S5-01603NB0	S5-01253NS0	S5-01603NS0	S5-02003NS0	S5-02503ND0



Technical information

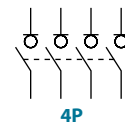


According to IEC 60947-3

		125 160 200 250					
Rated thermal current in ambient at	Ith	40 °C	A	125	160	200	250
		50 °C	A	125	160	200	250
		60 °C	A	125	160	200	200
Rated insulation voltage	Ui	V	1000	1000	1000	1000	
Rated impulse withstand voltage	Uimp	kV	8	8	8	8	
AC rated operational current ^{*(1)} (Rated operational frequency 50/60 Hz)	Ie	Ue 400V AC21A	A	125	160	200	250
		Ue 400V AC22A	A	125	160	200	250 ^{*(3)}
		Ue 400V AC23A	A	125	160	160	160
Rated breaking capacity	400V AC23	A	1000	1280	1280	1280	
Rated making capacity	400V AC23	A	1250	1600	1600	1600	

^{*(1)} Other voltages and / or utilization categories. Please consult
^{*(2)} Without limiting protective device (short-circuit maintained 50... 100 ms.)
^{*(3)} Rated operational current AC22B

		125 160 200 250			
Short - circuit behaviour					
Rated short-circuit making capacity ^{*(2)}	Icm kA (peak)	13	13	13	13
Rated short-time withstand current (1sec.)	Icw kA rms	7	7	7	7
Mechanical features					
Number of mechanical operations (according to the standards, for other values please consult)	Cycles	8000	8000	8000	8000
Maximum weight 3P	Kg	0,85	0,85	0,9	0,9
Maximum weight 3P + N	Kg	1	1	1	1



Also available 4P switch - disconnectors under request, please consult

Accessories



» Direct handle

CODE DS-SI01



» External handle included shaft*(e1)

IP65
CODE DS-SA01



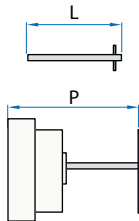
» External handle without shaft

IP65
CODE DS-SA03



» Emergency external handle included shaft*(e1)

IP65
CODE DS-SR01



» Shafts

Standard shaft included*(e1)

L (mm)	P (mm)
177	87... 197,5

Shaft extensions

Type 1

L (mm)	P (mm)	CODE
250	87... 278	DS-EP04

Type 2

L (mm)	P (mm)	CODE
387	87... 415	DS-EP05



» Terminal protection

CODE DS-CU01
☞ (1 unit for input or output)



» Terminal shrouds

	UP 3P (1 unit)	DOWN 3P (1 unit)	UP OR DOWN 4P (1 unit)
☞	DS-CU02	DS-CU03	DS-CU04
☞	DS-CU05	DS-CU06	DS-CU07



» DIN rail mounting

CODE DS-DN01
☞ (1 kit for 125-160A switches)



» Auxiliary contacts

1NO+1NC CODE D5LAU01
2NO+2NC CODE D5LAU02

Ie = 16 A (resistive loads)
4 A (inductive loads) at 250 Vac.



» Safety key lock device

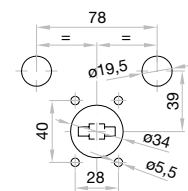
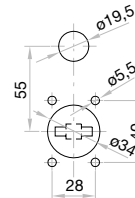
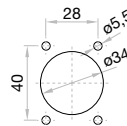
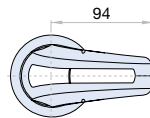
Simple CODE DS-CAB1
Double CODE DS-CEB1

For external handle, lock the handle by means of a key in position "OFF" (under request, in "ON"), the key can only be removed with the handle locked

Door drilling for handle and key lock device

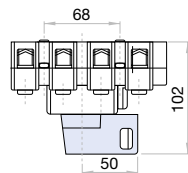
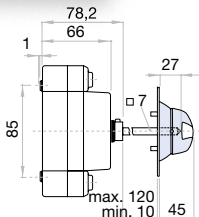
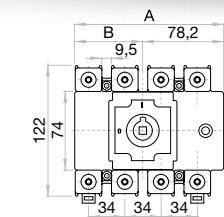
Simple

Double

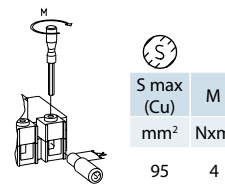


Dimensions (mm)

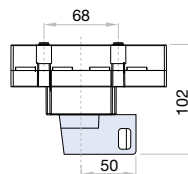
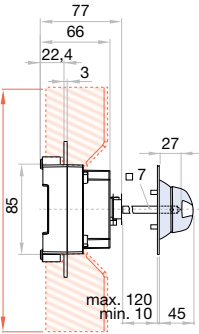
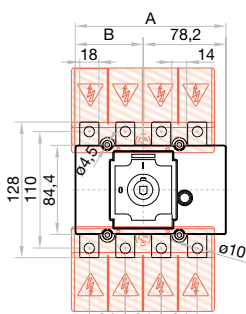
Door drilling for external handle



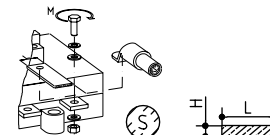
	A			B		
	2P	3P	4P	2P	3P	4P
125 A 160 A	131	131	142	53	53	64



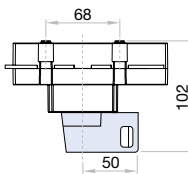
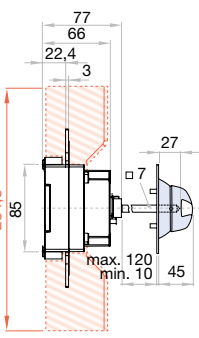
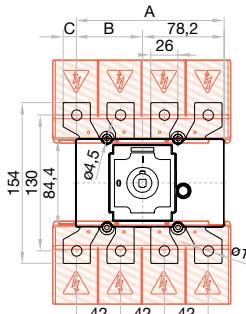
S max (Cu)	M
mm ²	Nxm
95	4



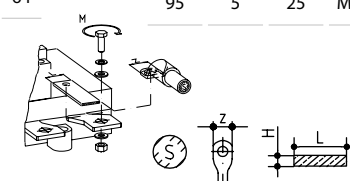
	A			B		
	2P	3P	4P	2P	3P	4P
125 A 160 A	131	131	142	53	53	64



S max (Cu)	H max (Cu)	L max (Cu)	T	M
mm ²	mm	mm	T	Nxm
95	5	25	M8	13



	A			B			C
	2P	3P	4P	2P	3P	4P	4P
200 A 250 A	131	131	142	53	53	64	11,8

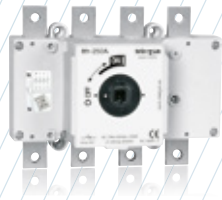
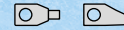


S max (Cu)	Z max	H max (Cu)	L max (Cu)	T	M
mm ²	mm	mm	mm	T	Nxm
120	30	5	30	M10	18

S5 AC Switch - disconnecter base mounting 2P - 3P - 3P+N

Size 1

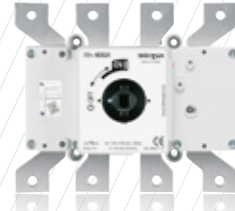
A 250|315|400



CODE - 250A

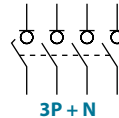
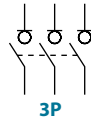


CODE - 315A



CODE - 400A

2P	S5-02502PRO	S5-03152PRO	S5-04002PCO
3P	S5-02503PRO	S5-03153PRO	S5-04003PCO
3P + N	S5-02503NRO	S5-03153NRO	S5-04003NCO



Technical information

According to IEC 60947-3



tests:

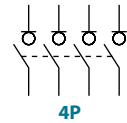


				250	315	400
Rated thermal current in ambient at	Ith	40 °C	A	250	315	400
		50 °C	A	250	315	400
		60 °C	A	250	315	320
Rated insulation voltage	Ui	V	1000	1000	1000	
Rated impulse withstand voltage	Uimp	kV	8	8	8	
AC rated operational current ^{*(1)} (Rated operational frequency 50/60 Hz)	Ie	Ue 400V AC21A	A	250	315	400
		Ue 400V AC22A	A	250	315	400
		Ue 400V AC23A	A	250	315	400
Rated breaking capacity	400V AC23	A	2000	2520	3200	
Rated making capacity	400V AC23	A	2500	3150	4000	

^{*(1)} Other voltages and / or utilization categories. Please consult

^{*(2)} Without limiting protective device (short-circuit maintained 50... 100 ms.)

			250	315	400
Short - circuit behaviour					
Rated short-circuit making capacity ^{*(2)}	Icm	kA (peak)	20	20	20
Rated short-time withstand current (1sec.)	Icw	kA rms	12	12	12
Mechanical features					
Number of mechanical operations (according to the standards, for other values please consult)	Cycles		8000	8000	5000
Maximum weight 3P	Kg		1,7	1,7	1,9
Maximum weight 3P + N	Kg		1,9	1,9	2,1



Also available 4P switch - disconnectors under request, please consult

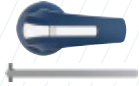


Accessories



» Direct handle

CODE DS-SI11



» External handle included shaft*(e1)

IP65
CODE DS-SA11



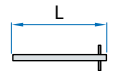
» External handle without shaft

IP65
CODE DS-SA14

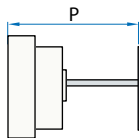


» Emergency external handle included shaft*(e1)

IP65
CODE DS-SR11



» Shafts



Standard shaft included *(e1)

L (mm)	P (mm)
227	103... 256

Shaft extensions

Type 1

L (mm)	P (mm)	CODE
375	103... 415	DS-EP14

Type 2

L (mm)	P (mm)	CODE
536	103... 576	DS-EP15



» Terminal protection

CODE DS-CU12

(1 unit for input or output)



» Terminal shrouds

CODE DS-CU11

(1 kit for input or output)



» Auxiliary contacts

1NO+1NC CODE D5LAU01
2NO+2NC CODE D5LAU02

Ie = 16 A (resistive loads)
4 A (inductive loads) at 250 Vac.

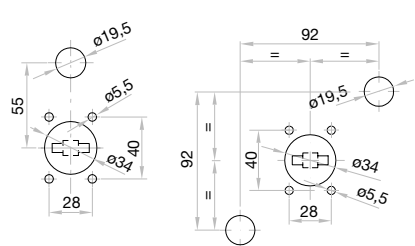


» Safety key lock device

Simple CODE DS-CA11
Double CODE DS-CE11

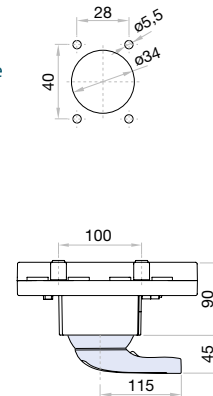
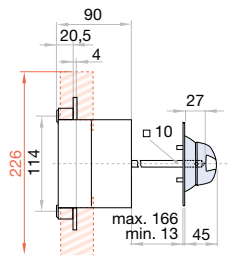
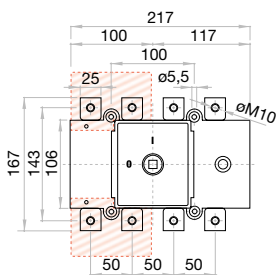
For external handle, lock the handle by means of a key in position "OFF" (under request, in "ON"), the key can only be removed with the handle locked

Door drilling for handle and key lock device



Dimensions (mm)

Door drilling for external handle



S max (Cu)	H max (Cu)	L max (Cu)	M
250 A 315 A	185	7	25

S max (Cu)	Z max	H max (Cu)	L max (Cu)	M
400 A	240	44	7	40

S5 AC Switch - disconnecter base mounting 3P - 3P+N

Size 2

A 500|630|800



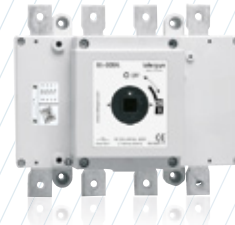
series
S5



CODE - 500A



CODE - 630A



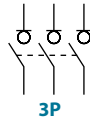
CODE - 800A

3P
3P + N

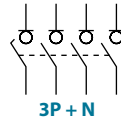
S5-05003PRO
S5-05003NR0

S5-06303PRO
S5-06303NR0

S5-08003PC0
S5-08003NC0



3P



3P + N

Technical information

According to IEC 60947-3



consult



consult



tests:

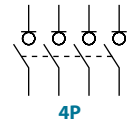


				500	630	800
Rated thermal current in ambient at	Ith	40 °C	A	500	630	800
		50 °C	A	500	630	720
		60 °C	A	500	630	640
Rated insulation voltage	Ui	V	1000	1000	1000	
Rated impulse withstand voltage	Uimp	kV	12	12	12	
AC rated operational current ^{*(1)} (Rated operational frequency 50/60 Hz)	Ie	Ue 400V AC21A	A	500	630	800
		Ue 400V AC22A	A	500	630	800
		Ue 400V AC23A	A	500	630	800
Rated breaking capacity	400V AC23	A	4000	5000	6400	
Rated making capacity	400V AC23	A	5000	6300	8000	

^{*(1)} Other voltages and / or utilization categories. Please consult

^{*(3)} Without limiting protective device (short-circuit maintained 50... 100 ms.)

				500	630	800
Short - circuit behaviour						
Rated short-circuit making capacity ^{*(2)}	Icm	kA (peak)		26	26	26
Rated short-time withstand current (1sec.)	Icw	kA rms		16	16	16
Mechanical features						
Number of mechanical operations (according to the standards, for other values please consult)	Cycles			5000	5000	3000
Maximum weight 3P	Kg			4,2	4,2	4,2
Maximum weight 3P + N	Kg			4,5	4,5	4,5



4P

Also available 4P switch - disconnectors under request, please consult



Accessories



» Direct handle

CODE DS-LI21



» External handle included shaft*(e1)

IP65
CODE DS-LA21



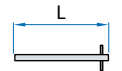
» External handle without shaft

IP65
CODE DS-LA24



» Emergency external handle included shaft*(e1)

IP65
CODE DS-LR21



» Shafts

Standard shaft included *(e1)

L (mm)	P (mm)
195	134... 240

Shaft extensions

Type 1

L (mm)	P (mm)	CODE
345	134... 400	DS-EP23

Type 2

L (mm)	P (mm)	CODE
535	134... 560	DS-EP24



» Terminal protection

CODE DS-CU22
(1 unit for input or output)



» Terminal shrouds

CODE DS-CU21
(1 kit for input or output)



» Auxiliary contacts

1NO+1NC CODE D5LAU01
2NO+2NC CODE D5LAU02

Ie = 16 A (resistive loads)
4 A (inductive loads) at 250 Vac.



» Safety key lock device

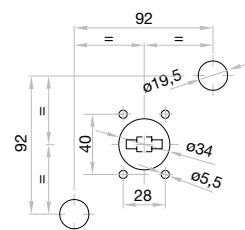
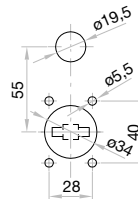
Simple CODE DS-CB21
Double CODE DS-CF21

For external handle, lock the handle by means of a key in position "OFF" (under request, in "ON"), the key can only be removed with the handle locked

Door drilling for handle and key lock device

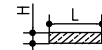
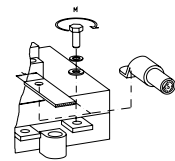
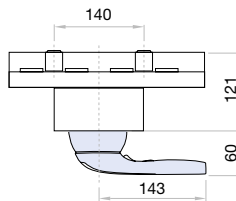
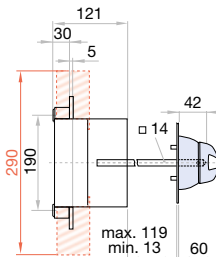
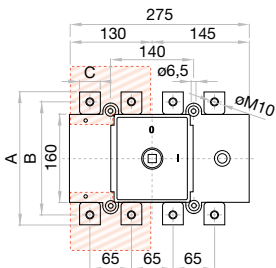
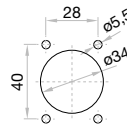
Simple

Double



Dimensions (mm)

Door drilling for external handle



	A	B	C	S max (Cu) mm ²	H max (Cu) mm	L max (Cu) mm	M	Nxm
500 A	220	190	25	2x185	6	40		
630 A	235	205	30	2x240	2x5	40	M10	24
800 A						50		

S5 AC Switch - disconnecter base mounting 3P - 3P+N

Size 3
A 800|1000|1250|2000



CODE-800A

3P
3P + N
S5-08003PRO
S5-08003NRO



CODE-1000A

S5-10003PCO
S5-10003NCO



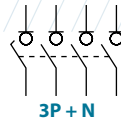
CODE-1250A

S5-12503PCO
S5-12503NCO



CODE-2000A

S5-20003PCO
S5-20003NCO



Technical information

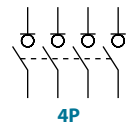
According to IEC 60947-3



				800	1000	1250	2000
Rated thermal current in ambient at	Ith	40 °C	A	800	1000	1250	2000
		50 °C	A	800	1000	1125	1800
		60 °C	A	800	900	900	1600
Rated insulation voltage	Ui			1000	1000	1000	1000
Rated impulse withstand voltage	Uimp			kV 12	12	12	12
AC rated operational current ^{*(1)} (Rated operational frequency 50/60 Hz)	Ie	Ue 400V AC21A	A	800	1000	1250	2000
		Ue 400V AC22A	A	800	1000	1250	2000 ^{*(3)}
		Ue 400V AC23A	A	800	1000	1000	-
Rated breaking capacity	400V AC23	A	6400	8000	8000	6000	
Rated making capacity	400V AC23	A	8000	10000	10000	6000	

^{*(1)} Other voltages and / or utilization categories. Please consult
^{*(2)} Without limiting protective device (short-circuit maintained 50... 100 ms.)
^{*(3)} AC22B

				800	1000	1250	2000
Short - circuit behaviour							
Rated short-circuit making capacity ^{*(2)}	Icm	kA (peak)		60	60	60	80
Rated short-time withstand current (1sec.)	Icw	kA rms		25	25	25	38
Mechanical features							
Number of mechanical operations (according to the standards, for other values please consult)	Cycles			3000	3000	3000	3000
Maximum weight 3P		Kg		7	7	7	18,5
Maximum weight 3P + N		Kg		7,6	7,6	7,6	20



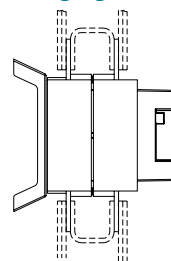
Also available 4P switch - disconnectors under request, please consult

Connection diagram

Connection diagram between front & rear



Bridging links ^{*(P2)}



Accessories



» Direct handle

CODE DS-LI31
CODE DS-LI41 (2000 A)



» External handle included shaft*(e1)

IP65
CODE DS-LA31
CODE DS-LA41 (2000 A)



» External handle without shaft

IP65
CODE DS-LA33 (for 800-1000-1250A)



» Emergency external handle included shaft*(e1)

IP65
CODE DS-LR31
CODE DS-LR41 (2000 A)



» Terminal shrouds

CODE DS-CU31
(1 kit for input or output, 2000 A on frontal side only)



» Bridging links*(P2)

BI-1 2000 A CODE x2 D5LPC32 (4 units)

*(P2) To comply with the operation and electrical features, the bridging links must be assembled to the switch. Please consult.



» Auxiliary contacts

1NO+1NC CODE D5LAU01
2NO+2NC CODE D5LAU02
1NO+1NC CODE DS-AU11 (2000 A)
2NO+2NC CODE DS-AU12 (2000 A)

Ie = 16 A (resistive loads)
4 A (inductive loads) at 250 Vac.

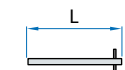


» Safety key lock device

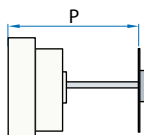
Simple CODE DS-CB31
Double CODE DS-CF31

For external handle, lock the handle by means of a key in position "OFF" (under request, in "ON"), the key can only be removed with the handle locked

Door drilling for handle and key lock device
Simple Double



» Shafts



Standard shaft included *(e1)

L (mm)	P (mm)
186	145... 242
(2000 A) 239	145... 242

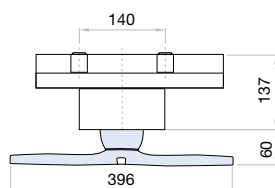
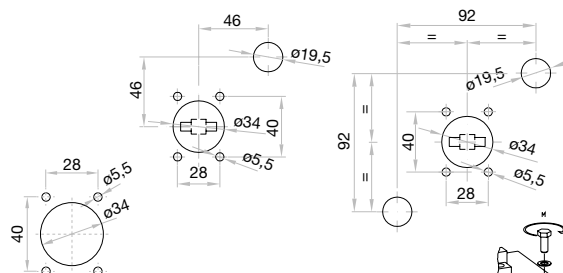
Shaft extensions

Type 1		
L (mm)	P (mm)	CODE
345	145... 411	DS-EP23
(2000 A) 485	145... 244	DS-EP44

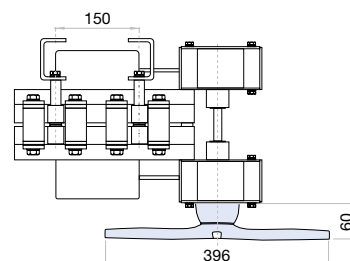
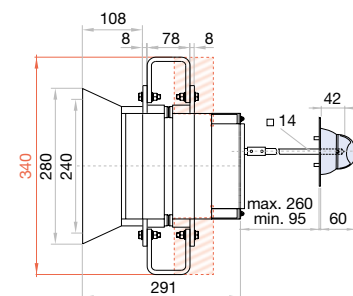
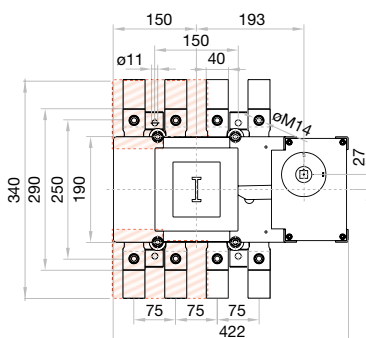
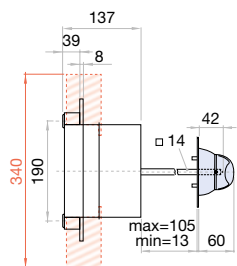
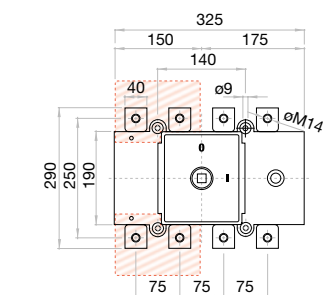
Type 2		
L (mm)	P (mm)	CODE
535	145... 600	DS-EP24
(2000 A) 635	145... 600	DS-EP45

Dimensions (mm)

Door drilling for external handle



S max (Cu)	H max (Cu)	L max (Cu)	T	M
mm ²	mm	mm		Nxm
800 A	2x240			
1000 A	2x10	50	M14	45
1250 A	2x300			

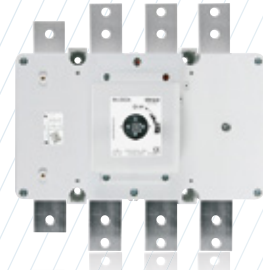
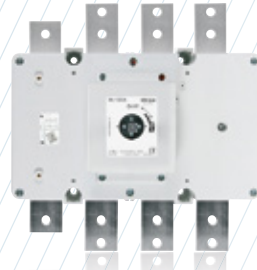
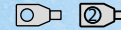


S max (Cu)	H max (Cu)	L max (Cu)	T	M
mm ²	mm	mm		Nxm
2000 A	4x300	4x10	50	M14 45

S5 AC Switch - disconnecter base mounting 3P - 3P+N

Size 4

A 1000|1250|1600|1800|2000



CODE-1000A

CODE-1250A

CODE-1600A

CODE-1800A

CODE-2000A

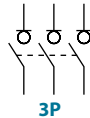
3P
3P + N
S5-10003PS0
S5-10003NS0

S5-12503PS0
S5-12503NS0

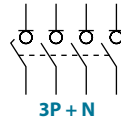
S5-16003PS0
S5-16003NS0

S5-18003PS0
S5-18003NS0

S5-20003PD0
S5-20003ND0



3P



3P + N

Technical information



tests:



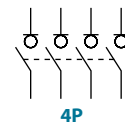
According to IEC 60947-3

		1000 1250 1600 1800 2000						
Rated thermal current in ambient at	Ith	40 °C	A	1000	1250	1600	1800	2000
		50 °C	A	1000	1250	1600	1800	1800
		60 °C	A	1000	1000	1600	1600	1600
Rated insulation voltage	Ui	V	1000	1000	1000	1000	1000	
Rated impulse withstand voltage	Uimp	kV	12	12	12	12	12	
AC rated operational current ^{*(1)} (Rated operational frequency 50 / 60 Hz)	Ie	Ue 400V AC21A	A	1000	1250	1600	1800	2000
		Ue 400V AC22A	A	1000	1250	1600	1800	2000
	Ue 400V AC23B	A	-	-	1600	1600	1600	
	Ue 800V AC21B	A	-	-	-	1600	-	
Rated breaking capacity	400V AC22	A	3000	3750	4800	5400	6000	
Rated making capacity	400V AC22	A	3000	3750	4800	5400	6000	

^{*(1)} Other voltages and / or utilization categories. Please consult

^{*(2)} Without limiting protective device (short-circuit maintained 50... 100 ms.)

		1000 1250 1600 1800 2000					
Short - circuit behaviour							
Rated short-circuit making capacity ^{*(2)}	Icm	kA (peak)	60	60	75	75	75
Rated short-time withstand current (1sec.)	Icw	kA rms	25	25	50	50	50
Mechanical features							
Number of mechanical operations (according to the standards, for other values please consult)	Cycles	3000	3000	3000	3000	3000	
Maximum weight 3P	Kg	18,5	18,5	18,5	18,5	18,5	
Maximum weight 3P + N	Kg	20,8	20,8	20,8	20,8	20,8	



4P

Also available 4P switch - disconnectors under request, please consult



Accessories



» Direct handle

CODE DS-LI41



» External handle included shaft*(e1)

IP65
CODE DS-LA41



» External handle without shaft

IP65
CODE DS-LA43



» Emergency external handle included shaft*(e1)

IP65
CODE DS-LR41



» Shafts

Standard shaft included*(e1)

L (mm)	P (mm)
239	235... 400

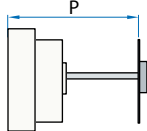
Shaft extensions

Type 1

L (mm)	P (mm)	CODE
485	235... 686	DS-EP44

Type 2

L (mm)	P (mm)	CODE
635	235... 836	DS-EP45



» Terminal shrouds

CODE DS-CU41
(1 kit for input or output)



» Auxiliary contacts

1NO+1NC CODE D5LAU01
2NO+2NC CODE D5LAU02

Ie = 16 A (resistive loads)
4 A (inductive loads) at 250 Vac.

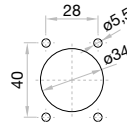
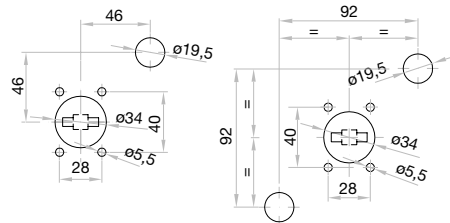


» Safety key lock device

Simple CODE DS-CB41
Double CODE DS-CF41

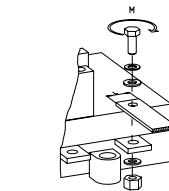
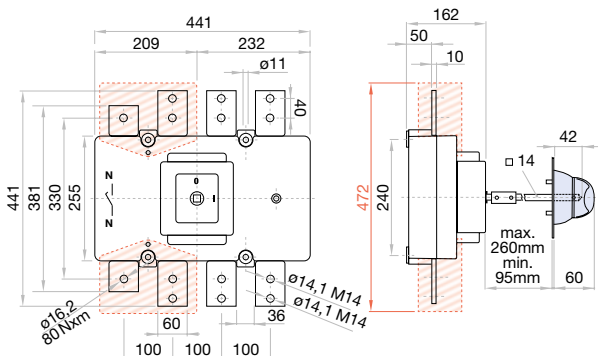
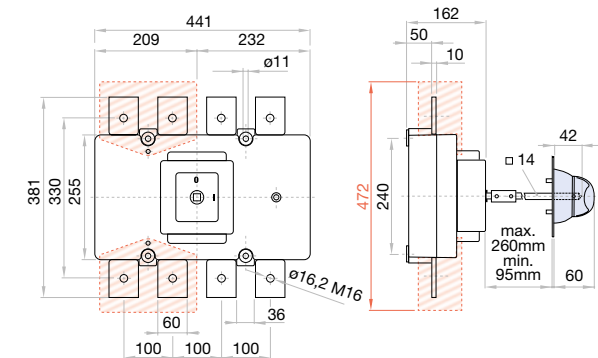
For external handle, lock the handle by means of a key in position "OFF" (under request, in "ON"), the key can only be removed with the handle locked

Door drilling for handle and key lock device

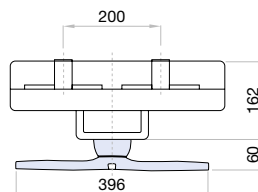


Door drilling for external handle

Dimensions (mm)




	H max (Cu) mm	L max (Cu) mm	M	M
1000 A	2x10	80	M16	80
1250 A				



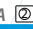


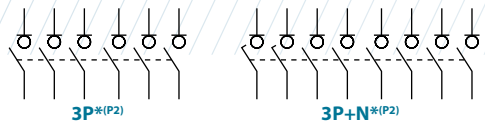
	H max (Cu) mm	L max (Cu) mm	M	M
1600 A	2x10	80	M14	55
1800 A				
2000 A				

S₅N AC Switch - disconnecter base mounting 3P - 3P+N

Size 5
A 2000|2500|3150




	CODE-2000A 	CODE-2500A 	CODE-3150A 
3P	S5N20003PS0	S5N25003PS0	S5N31503PS0
3P+N	S5N20003NS0	S5N25003NS0	S5N31503NS0



Technical information



According to IEC 60947-3

		2000 2500 3150			
Rated thermal current in ambient at	Ith 40 °C	A	2000	2500	3150
	50 °C	A	2000	2500	2835
	60 °C	A	2000	2500	2520
Rated insulation voltage	Ui	V	1000	1000	1000
Rated dielectric strength	50 Hz, 1 min.	V	10000	10000	10000
Rated impulse withstand voltage	Uimp	kV	8	8	8
AC rated operational current ^{*(1)}	Ue 400V AC21B	A	2000	2500	3150
	(Rated operational frequency 50/60 Hz) Ue 400V AC22B	A	2000	2500	2500

		2000 2500 3150			
AC rated operational power ^{*(2)}	Pe 3x400V AC21	kW	-	-	1108,5
	3x400V AC22	kW	886,8	997,6	-
Rated capacitor power	400V, sen φ = 0,65	kVAr	720,5	810,5	900,6
	Rated breaking capacity				
	400V AC21	A	-	-	16000
	400V AC22	A	12800	14400	-
Rated making capacity	400V AC21	A	-	-	20000
	400V AC22	A	16000	18000	-

Short - circuit behaviour

Rated short-circuit making capacity ^{*(3)}	Icm	kA (peak)	60	60	60
Rated short-time withstand current (1sec.)	Icw	kA rms	50	50	50

Mechanical features

Number of mechanical operations ^{*(4)}	Cycles	600	600	600
Maximum weight 3P (without bridging links)	Kg	42,9	42,9	42,9
Maximum weight 3P+N (without bridging links)	Kg	47,3	47,3	47,3

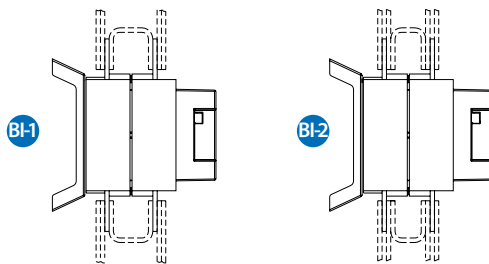
^{*(1)} Other voltages and / or utilization categories. Please consult
^{*(2)} Indicative values: current values vary from one motor manufacturer to another
^{*(3)} Without limiting protective device (short-circuit maintained 50... 100 ms.)
^{*(4)} Please consult us for more operations

Connection diagram

Connection diagram between front & rear



Bridging links ^{*(P2)}



Accessories



» Direct handle

CODE DS-LI41



» External handle included shaft*(e1)

IP65
CODE DS-LA41



» External handle without shaft

IP65
CODE DS-LA43



» Emergency external handle included shaft*(e1)

IP65
CODE DS-LR41



» Shafts

Standard shaft included *(e1)

L (mm)	P (mm)
239	458 ... 618



» Bridging links*(P2)

BI-1 2000 A CODE x2 D5LPC41 (4 units)
2500 A

BI-2 3150 A CODE x2 D5LPC42 (4 units)

CONSULT CODE

*(P2) To comply with the operation and electrical features, the bridging links must be assembled to the switch. Please consult.



» Auxiliary contacts

1NO+1NC CODE D5-LAU01
2NO+2NC CODE D5-LAU02

Ie = 16 A (resistive loads)
4 A (inductive loads) at 250 Vac.



» Safety key lock devices

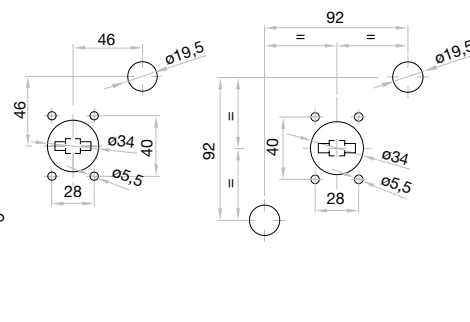
Simple CODE DS-CB41
Double CODE DS-CF41

For external handle, lock the handle by means of a key in position "OFF" (under request, in "ON"), the key can only be removed with the handle locked

Door drilling for handle and key lock device

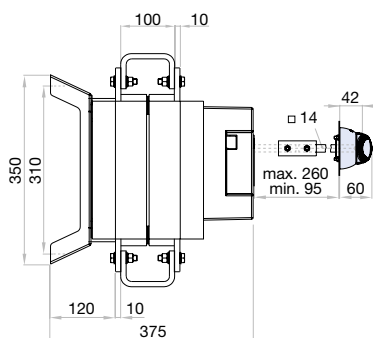
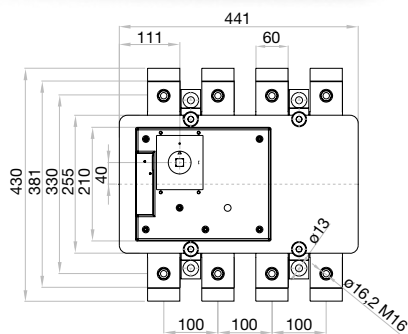
Simple

Double

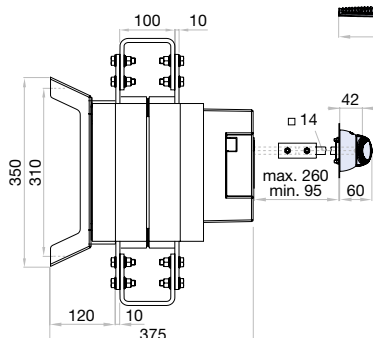
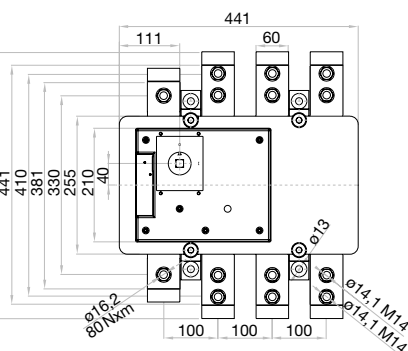
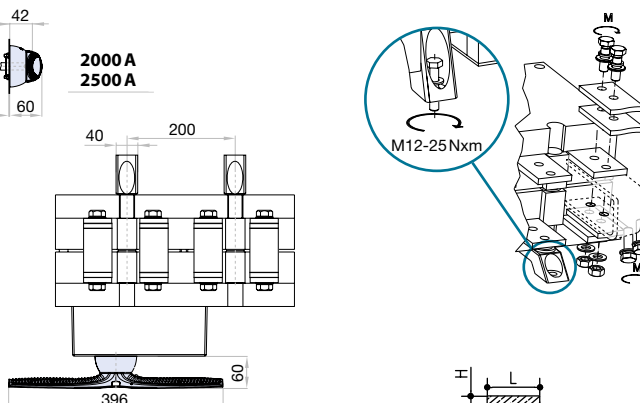


Dimensions (mm)

Door drilling for external handle



2000 A
2500 A



3150 A



H max (Cu) mm	L max (Cu) mm	T	M
---------------	---------------	---	---

2000 A 2500 A	2x10	80	M16	80
3150 A	2x10	80	M14	55

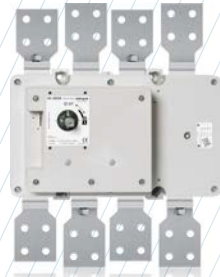
S5N AC Switch - disconnecter base mounting 3P - 3P+N

Size 5

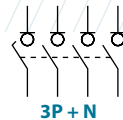
A 2000|2500|3150



series
S5N



	CODE-2000A	CODE-2500A	CODE-3150A
3P	S5N20003PP0	S5N25003PP0	S5N31503PP0
3P + N	S5N20003NP0	S5N25003NP0	S5N31503NP0



Technical information



According to IEC 60947-3

				2000	2500	3150
Rated thermal current in ambient at	Ith	40 °C	A	2000	2500	3150
		50 °C	A	2000	2500	2835
		60 °C	A	2000	2500	2520
Rated insulation voltage	Ui	V	1000	1000	1000	
Rated dielectric strength	50 Hz, 1 min.	V	10000	10000	10000	
Rated impulse withstand voltage	Uimp	kV	8	8	8	
AC rated operational current ^{*(1)}	Ie	Ue 400V AC21B	A	2000	2500	3150
		Ue 400V AC22B	A	2000	2500	2500

^{*(1)} Other voltages and / or utilization categories. Please consult
^{*(2)} Indicative values: current values vary from one motor manufacturer to another
^{*(3)} Without limiting protective device (short-circuit maintained 50... 100 ms.)
^{*(4)} Please consult us for more operations

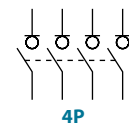
				2000	2500	3150
AC rated operational power ^{*(2)}	Pe	3x400V AC21	kW	-	-	1108,5
		3x400V AC22	kW	886,8	997,6	-
Rated capacitor power	400V, sen φ = 0,65	kVAr		720,5	810,5	900,6
Rated breaking capacity	400V AC21	A		-	-	16000
	400V AC22	A		12800	14400	-
Rated making capacity	400V AC21	A		-	-	20000
	400V AC22	A		16000	18000	-

Short - circuit behaviour

Rated short-circuit making capacity ^{*(3)}	Icm	kA (peak)	60	60	60
Rated short-time withstand current (1sec.)	Icw	kA rms	50	50	50

Mechanical features

Number of mechanical operations ^{*(4)}	Cycles	600	600	600
Maximum weight 3P (without bridging links)	Kg	42,9	42,9	42,9
Maximum weight 3P+N (without bridging links)	Kg	47,3	47,3	47,3



Also available 4P switch - disconnecter under request, please consult



Accessories



» Direct handle

CODE DS-LI41



» External handle included shaft ^{*(e1)}

IP65

CODE DS-LA41



» External handle without shaft

IP65

CODE DS-LA43



» Emergency external handle included shaft ^{*(e1)}

IP65

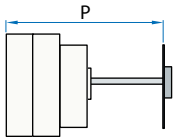
CODE DS-LR41



» Shafts

Standard shaft included ^{*(e1)}

L (mm)	P (mm)
239	458 ... 618



» Auxiliary contacts

1NO+1NC CODE D5LAU01
2NO+2NC CODE D5LAU02

Ie = 16 A (resistive loads)
4 A (inductive loads) at 250 Vac.

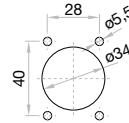
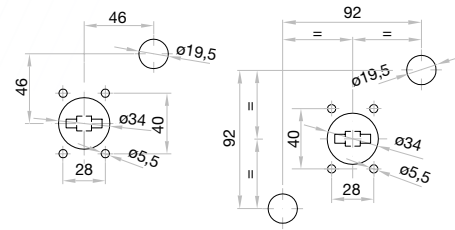


» Safety key lock device

Simple CODE DS-CB41
Double CODE DS-CF41

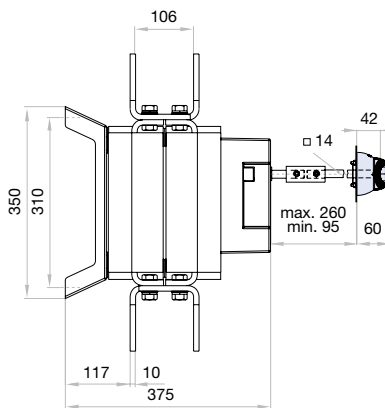
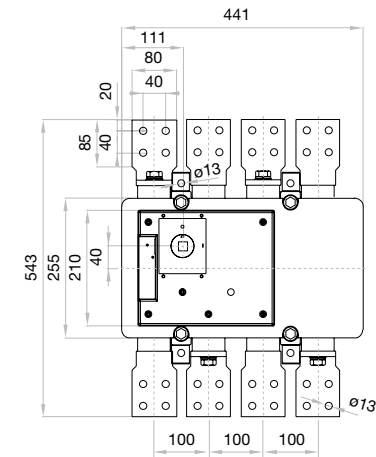
For external handle, lock the handle by means of a key in position "OFF" (under request, in "ON"), the key can only be removed with the handle locked

Door drilling for handle and key lock device
Simple Double

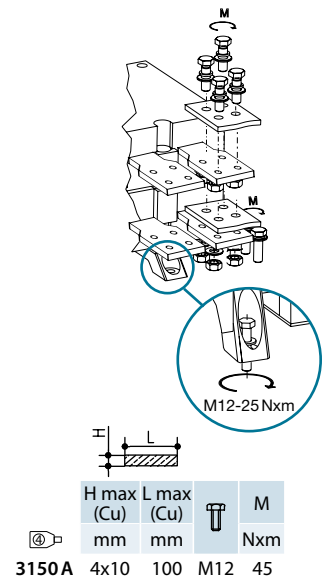
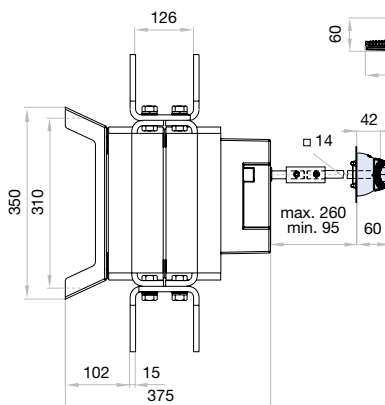
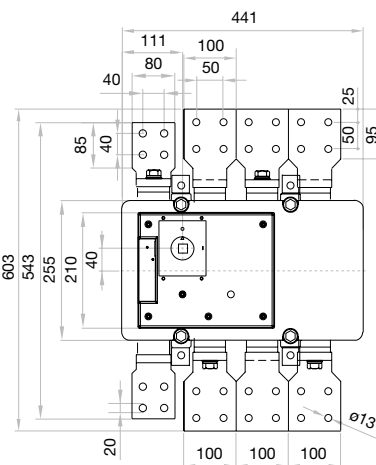


Dimensions (mm)

Door drilling for external handle



	H max (Cu) mm	L max (Cu) mm	M	M
2000 A	4x10	80	M12	45
2500 A				

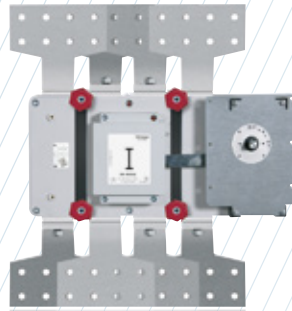


	H max (Cu) mm	L max (Cu) mm	M	M
3150 A	4x10	100	M12	45

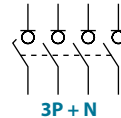
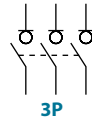
S5 AC Switch - disconnecter base mounting 3P - 3P+N

Size 6

A 4000|5000|6300



	CODE-4000A	CODE-5000A	CODE-6300A
3P	S5-40003PP0	S5-50003PP0	S5-63003PP0
3P + N	S5-40003NP0	S5-50003NP0	S5-63003NP0



Technical information



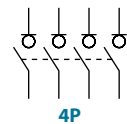
According to IEC 60947-3

				4000	5000	6300
Rated thermal current in ambient at	Ith	40 °C	A	4000	5000	6300
		50 °C	A	4000	5000	5670
		60 °C	A	3500	4400	5040
Rated insulation voltage	Ui	V	1000	1000	1000	
Rated impulse withstand voltage	Uimp	kV	12	12	12	
AC rated operational current ^{*(1)} (Rated operational frequency 50/60 Hz)	Ie	Ue 400V AC21A	A	4000	5000	6300
		Ue 400V AC22A	A	3500	4000	4000
		Ue 400V AC23A	A	2000	2500	2500

^{*(1)} Other voltages and / or utilization categories. Please consult

^{*(2)} Without limiting protective device (short-circuit maintained 50... 100 ms.)

				4000	5000	6300
Rated breaking capacity	400V	AC21	A	6000	7500	9450
Rated making capacity	400V	AC21	A	6000	7500	9450
Short - circuit behaviour						
Rated short-circuit making capacity ^{*(2)}	Icm	kA (peak)		100	100	100
Rated short-time withstand current (1sec.)	Icw	kA rms		50	50	50
Mechanical features						
Number of mechanical operations (according to the standards, for other values please consult)	Cycles			2000	2000	2000
Maximum weight 3P	Kg			100	130	130
Maximum weight 3P + N	Kg			110	140	140



Also available 4P switch - disconnectors under request, please consult

Accessories



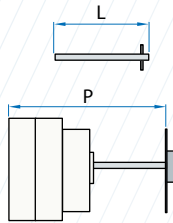
» **External handle** included shaft ^{*(e1)}
(Slider bar)
CODE DS-EN61



» **Auxiliary contacts**

1NO+1NC CODE DS-AU11
2NO+2NC CODE DS-AU12

I_e = 16 A (resistive loads)
4 A (inductive loads) at 250 Vac.



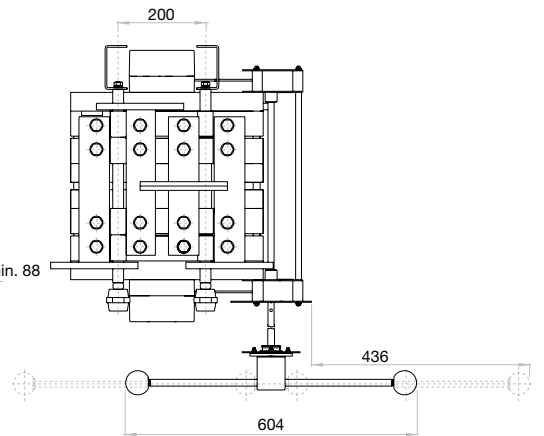
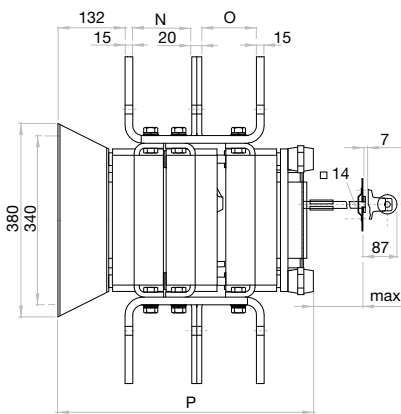
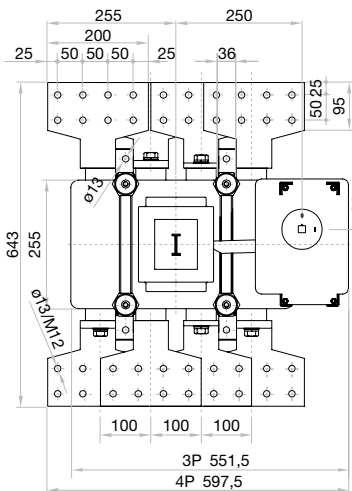
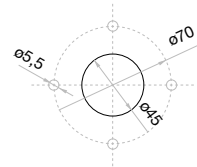
» **Shafts**

Standard shaft included ^{*(e1)}

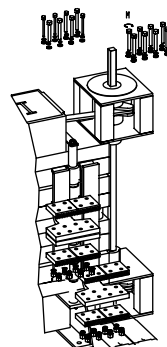
	L (mm)	P (mm)
4000 A	333	578... 728
5000 A	333	720... 870
6300 A	333	720... 870

Dimensions (mm)

Door drilling for external handle



	N	O	P	ø
4000 A	116	107,5	502,5	13
5000 A	164,5	164,5	632	
6300 A				



	H max (Cu)	L max (Cu)	T	M
	mm	mm		Nxm
4000 A	4x10			
5000 A	6x10	100	M12	45
6300 A				

Technical Sales Support

1300 876 722

estimating@tropac.com.au

WWW.TROPAC.COM.AU

Head Office

QLD: 19-27 Fred Chaplin Circuit, Bells Creek QLD 4551

Branch Locations

NSW: Unit 3/10 George Young St, Auburn NSW 2144

VIC: 193 O'Herns Rd, Epping VIC 3076

Version 1.0.0

© Copyright 2024 Tro Pacific Holdings Pty Ltd t/a TROPAC.

All rights reserved.