

**CE  
AF  
RE  
RE**

# Industrial Electrical Solutions

Company Profile

**Performance Certainty.**

# Contents

<b>Introduction</b>	<b>2</b>
Company Background	3
Mission & Values Statement	4
Brands Overview	5
Our Promise & Quality Commitment	6
Our Solutions	7
<b>Our Brands</b>	<b>8</b>
IP Enclosures	8
Weidmuller	10
LS Electric	12
Power Flex Cables	14
VERSCH	14
Brady	15
C&S Electric	16
Bridex	16
Icotek	17
Auer Signal	18
Fibox	19
Allbro	20
Broyce Control	20
<b>Branch Location &amp; Delivery</b>	<b>21</b>
<b>Value Added Services</b>	<b>22</b>
TROBOT™	23

---

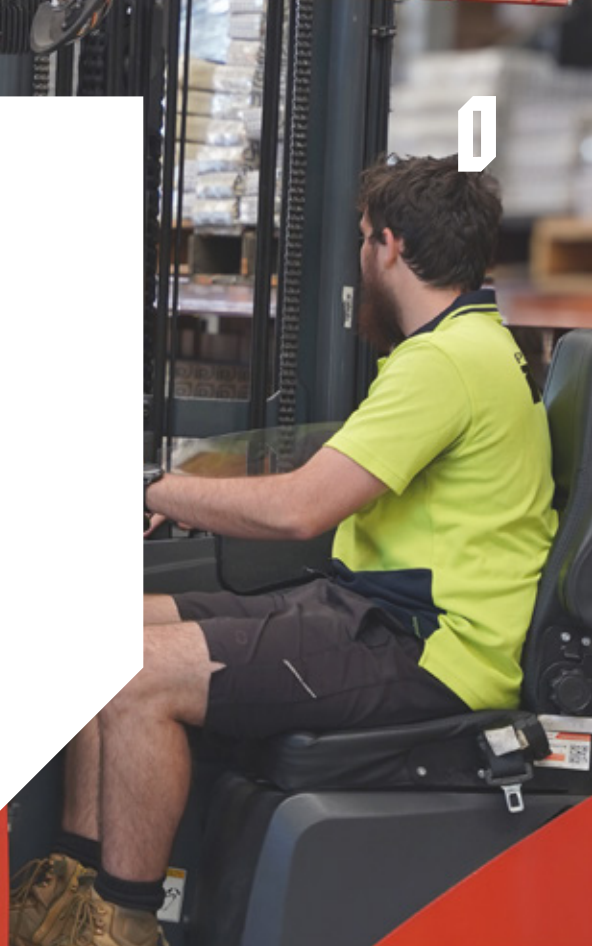
To view our full product catalogue,  
please visit our website [tropac.com.au](http://tropac.com.au)



# Who We Are

TROPAC is the industry leader in industrial electrical solutions. We come from a family of certified electricians with over 65 years of experience in our DNA.

We build trusted relationships with high-quality brands from around the world so you can access products that perform. Since 2014, we have gained the confidence of our customers who manage crucial projects in some of Australia's toughest industrial environments.



# Team Leadership

TROPAC's founders, Jon and Anthony Hungerford are third-generation certified electricians. In 2014, they decided to use their family's 65 years of electrical experience to deliver heavy-duty industrial solutions that businesses could rely on. They have worked on significant electrical projects and understand the role their products and solutions need to play on-site.



**ANTHONY HUNGERFORD**  
Chief Executive Officer



**JON HUNGERFORD**  
Chief Revenue Officer



## Our Mission

Our mission is to create a reliable advantage for the businesses we work with. We bring certainty and speed to tough industrial environments where performance matters. Our customers get access to global connections, high-quality products, and outstanding technical support that delivers value to their business. As a go-to partner, we invest our time, energy, and expertise to see our customers succeed.

## Our Values

To be the most reliable partner, we need to constantly evolve. Relationships are the heartbeat of TROPAC and we always improve our offering to be faster, more efficient, and of higher quality. The smoother our customer experience, the more advantage we can deliver to everyone in our pack. We are always seeking the highest quality products from across the world, ensuring we build reliable connections at every step.

**Trusted partners.**

**Reliable advantage.**

**Outstanding connections.**

# Our Brands

Our suppliers are the quiet overachievers. We build connections with companies that create products that perform with certainty, for a fair price. Gain access to our trusted network, of high quality industrial electrical products from around the world, with a distinct advantage.



Auer Signal





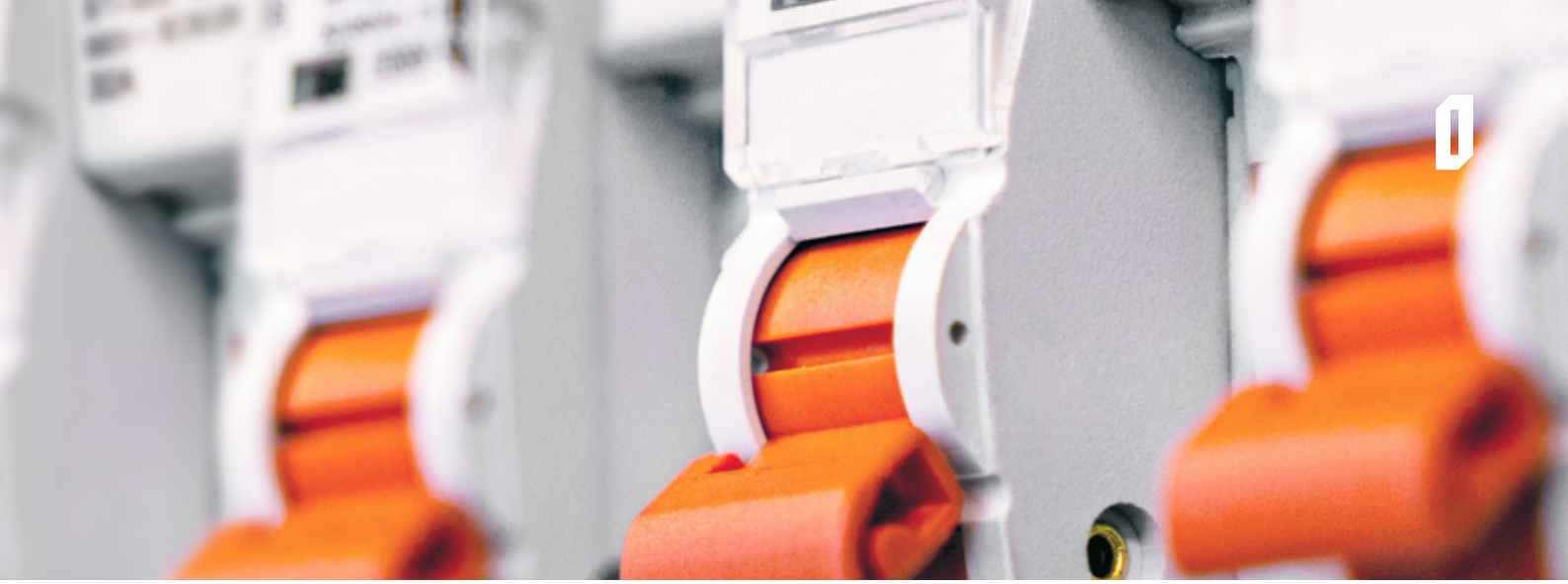
# Our Promise

We are the go-to destination for trusted global brands, enabling our customers to protect, automate, and control. We will continue to build our network and seek bold connections. When performance certainty matters the most, you can get it from TROPAC.

# Our Quality Commitment

As an Australian-owned distributor, all of our products are of the highest quality and compliant with the relevant statutory regulations in Australia. We operate under a compliant Quality Management System (ISO 9001:2015), Environmental Management System (ISO 14001:2015), and Occupational Health and Safety System (ISO 45001:2018) ensuring the highest standards for the importation, warehousing, sales, and distribution of industrial electrical enclosures and components.





# Our Solutions

Industrial environments and design forces place all kinds of pressures on your electrical assets. Using our technical expertise and global connections, we source the best electrical protection, automation, and control solutions from trusted brands. Gain access to the best in pack and operate with the assurance that our solutions are durable, reliable, and compliant.

## ▲ **Protect**

Our high-quality data and electrical enclosures are subjected to rigorous testing in certified laboratories. Your infrastructure will be protected in tough and unpredictable environments.

## ▲ **Automate**

Our automation solutions keep your operations running smoothly on-site. Prevent failures, minimise downtime, and spend less time worrying about maintenance.

## ▲ **Control**

Our electrical control solutions are designed to meet a variety of industrial needs. Gain more control of your infrastructure and operations with the flick of a switch.

# Electrical Enclosures and Cabinets

IP Enclosures is a trusted Australian brand offering electrical enclosures in powder-coated steel, aluminium, and stainless steel. Certified to IEC/EN 62208, 61439, and AS 60529, with protection ratings up to IP69K. UL, CE, UKCA, and RoHS compliant, with thermal accessories for long-term durability in harsh environments.



STEEL / STAINLESS STEEL / ALUMINIUM

**IP66**

## Wall Mount

- > Powder-coated Galvanised Steel, Grade 304 & 316L Stainless Steel and Aluminium
- > Advanced Features & Accessories
- > Large Size Range
- > 5 Year Warranty



STEEL / STAINLESS STEEL

**IP55**

## Floor Standing

- > Powder-coated Galvanised Steel, Grade 316L Stainless Steel
- > Modular, Large Size Range
- > Accessories
- > 5 Year Warranty



STEEL / STAINLESS STEEL / ALUMINIUM

**IP66**

## Wall Mount Data Racks

- > Powder-coated Galvanised Steel, Grade 316L Stainless Steel and Aluminium
- > 4RU-15RU Size Range availability
- > Advanced Features & Accessories
- > 5 Year Warranty



STEEL / STAINLESS STEEL

**IP66**

## Floor Standing Data Racks

- > Powder-coated Galvanised Steel, Grade 316L Stainless Steel
- > Single & Double Bay versions available
- > Heavy-duty option for Battery Storage
- > 12RU-42RU Size Range with Rear Door Option
- > Accessories
- > 5 Year Warranty



STEEL / ALUMINIUM

**IP55 IP66**

## Field Cabinets (Pole)

- > Aluminium & Powder-coated Galvanised Steel, Stainless Steel
- > Ventilated & Non-ventilated options
- > Accessories
- > 5 Year Warranty



STEEL / ALUMINIUM

**IP55 IP66**

## Field Cabinets (Plinth)

- > Aluminium & Powder-coated Galvanised Steel
- > Ventilated & Non-ventilated options
- > Single & Double Bay versions available
- > Accessories
- > 5 Year Warranty

Protection in the toughest conditions™



STEEL / ALUMINIUM

IP55

### Air Conditioned Field Cabinets

- > Aluminium & Powder-coated Galvanised Steel
- > Air Conditioner included
- > Single & Double Bay versions available



STEEL / STAINLESS STEEL

IP66

### Sloping Roof

- > Powder-coated Galvanised Steel, Grade 316L Stainless Steel
- > Large Size Range
- > Heavy-duty options (Mining)
- > 5 Year Warranty



IP69K

### IP69K+ Hygienic

- > 304 Stainless Steel, FDA Approved
- > Certified for Food-grade & Pharmaceutical Applications
- > Smooth Surfaces Without Concaves
- > 5 Year Warranty



IP54 IP55

### Fans & Filters

- > Fan Sizes from 25-700m<sup>3</sup>/hr
- > Filter & Louvre Vents
- > Replacement Filter Mats
- > UV Rated option



IP54 IP55

### Air Conditioners

- > Wall and Roof Mounted
- > Sizes from 350W-3.8kW
- > Steel or Stainless Steel



### Accessories

- > Thermal Controllers
- > Vent Hoods & Vented Doors
- > Sun Shields
- > Anti-condensation Heaters
- > Mounting & Locks

## Industrial Connectivity & Tools

Weidmüller is a trusted name in industrial connectivity, offering terminal blocks, relays, power supplies, and Ethernet solutions. Products are certified to IEC 60947, UL 1059, and CSA standards, with RoHS compliance across key ranges. Built for reliable signal, data, and power distribution in automation, field wiring, and control panels.



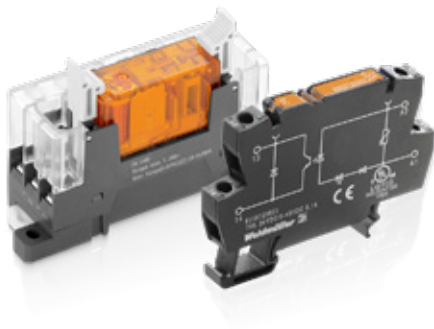
### Power Supplies

- › DC Power Supplies
- › Uninterruptible Power Supply Systems (UPS)
- › DC/DC Converters



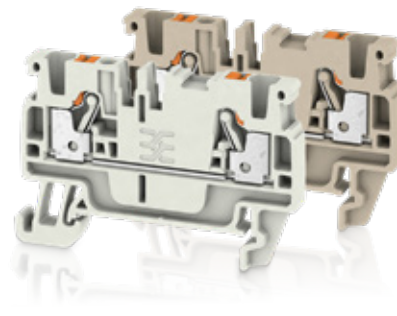
### Industrial Ethernet

- › Unmanaged/Managed Network Switches
- › Power Over Ethernet (POE) Switches
- › Serial/Fibre-Optic Converters
- › Industrial Network Routers
- › Media Converters



### Relays

- › General Purpose
- › Solid State
- › Safety Relays
- › Relay Bases & Accessories



### DIN Terminals

- › Screw Terminals
- › Push-in Terminals
- › Snap-in Terminals
- › Accessories



### Printers & Markers

- › Inkjet Printers
- › Thermal Transfer Printers
- › Accessories



### Surge Protection

- › Instrumentation & Control
- › AC and DC Applications
- › Solar Surge Protection



### Accessories

- › Cable Cutters & Strippers
- › Crimpers & Pliers
- › Voltage Testers

# Circuit Protection & Motor Control

LS Electric is a trusted name of circuit protection and motor control, offering MCBs, RCDs, RCBOs, MCCBs, and ACBs. Products meet IEC 60898-1 and 60947-2 standards, with Susol MCCBs certified to UL 489 and CSA C22.2. Built for industrial safety and reliability, LS Electric solutions perform with confidence in critical applications.



## MCB

- > Overcurrent Protection
- > Available with 6kA and 10kA Fault Current Ratings
- > 1-4 Pole Configurations
- > 1-125 Amps Current Ratings



## RCD & RCBO

- > Earth Leakage Protection
- > 10-40 Amp Single Pole RCBO's
- > 1-4 Pole Configurations
- > 40 & 63 Amp RCD's



## MCCB

- > Overcurrent Protection
- > 16-1600 Amp
- > 50kA-150kA Fault Current Rating
- > 1, 3 & 4 Pole
- > Available with Adjustable Trip Unit



## ACB

- > Overcurrent Protection
- > 630-6300 Amp
- > 3 & 4 Pole
- > Drawout & Fixed



## Contactors

- > 2.2kW-900kW Size availability
- > AC and DC Coil Voltage options
- > Auxiliary Contacts included
- > Accessories

## Thermal Overloads

- > Comprehensive Motor Protection
- > Adjustable Trip Settings
- > Durable and Reliable



## Motor Protection

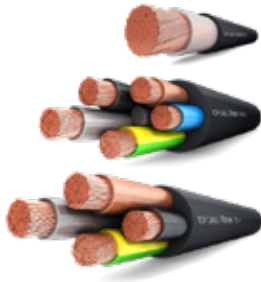
- > Motor Protection Circuit Breakers
- > Up to 100A Current Rating & High Breaking Capacities up to 100kA at 415VAC
- > Wide Range available
- > Accessories

## Modular Contactors

- > 2 & 4 Pole
- > 25-100A Current Rating.
- > Different Contact Configuration

## Industrial Cables

Power Flex's high-performance cables are trusted in key industries including defence, marine & aerospace, rail & infrastructure, mining, oil & gas, and solar.



### Flexible Power & Submersible Cables

- > XLPE (RV-K) & premium rubber (Xtrem) ranges
- > Permanent submersion rating up to 500 metres (AD8)
- > AS/NZS 4020 certified for drinking water



### Specialised Application Cables

- > TOPDRIVE VSD and TOXFREE MARINE ranges
- > Double-screened VSD cables for superior EMC protection
- > Marine-class approvals



### Control & Signalling Cables

- > Multi-conductor control & signalling cables
- > Class 5 flexibility for easy installation
- > Numbered cores for simple termination



### Building & Infrastructure Cables

- > TRI-RATED switchboard & TOXFREE (LSZH) wires
- > Low Smoke Zero Halogen (LSZH) for fire safety
- > Triple-Certified (UL, CSA, BS) quality

## DIN-Rail Power Supplies

VERSCH is a recognised supplier of DIN-rail power supplies. With wide 90–264 VAC input, thermal overload protection, and high efficiency, VPS1 units meet industrial power demands. Built for control panels, automation systems, and harsh environment installations.



IP20

### VPS1 Power Supplies

- > 12V, 24V & 48V options
- > Power: 75W-240W
- > Current: 1.6A-10A
- > Input Voltage Range: 90–264VAC / 127–370VDC
- > Up to 450,000 hrs @ 25°C (MIL-HDBK-217F)

# Industrial Label Printers

Brady is a trusted name in industrial labelling and safety, offering printers, labels, sleeves, ribbons, and lockout/tagout systems. Label materials are UL-recognised, CSA-accepted, and tested to IEC standards for lasting compliance. Built for durable, clear identification in critical wiring, equipment, and safety applications.



## Portable Printers

- > M210 Handheld Label Maker & M211 Bluetooth Label Printer
- > M410 Label Printer
- > M610 Handheld Label Maker & M611 Bluetooth Label Printer
- > M710 WiFi & Bluetooth Label Printer
- > Accessories



## Desktop Printers

- > BBP12 Label Printer
- > i7100 Industrial label Printer
- > i5300 Industrial Label Printer
- > Accessories



## Labels & Sleeves

- > Wire Marking Solutions
- > Harsh Environment Labels
- > Specialty Tags and Labels
- > Heat Shrink Solutions
- > DuraSleeve and Self-Laminating Labels (bulk options)
- > Polyester Labels



## Adhesive Labels

- > Permanent
- > High Adhesion
- > Chemical Resistant
- > Heat Resistant
- > Removable



## Ribbons

- > General Purpose Ribbons
- > High-Performance Ribbons
- > Colored Ribbons
- > Heat-Shrinkable Ribbons
- > Specialty Ribbons



## Lock Out / Tag Out

- > Lockout Hasps
- > Circuit Breaker Lockouts
- > Plug Lockouts
- > Isolation

# Changeover Switches & Switch Disconnectors

C&S Electric is a trusted name in industrial switchgear, offering switch disconnectors, changeover switches, and load break switches. Built to IEC 60947-3 standards and manufactured in ISO-certified facilities, with select ranges UL and CSA approved. Designed for safe, reliable control and distribution in industrial power systems.



## Changeover Switches

- › Sizes available from: 125-3150 Amp
- › 4 Pole
- › Accessories



## Load Break Switches

- › Sizes available from: 25-3150 Amp
- › 3 & 4 Pole
- › Accessories

**BRIDEX**

# Power Distribution

Bridex is a recognised supplier of chassis systems for mounting MCBs and MCCBs in industrial switchboards. Available in multiple configurations, chassis are built for strength, accessibility, and modularity. Supports safe, organised breaker installations in power distribution and control applications.



## MCB & MCCB Chassis

- › Supports various MCB & MCCB Configurations
- › 12-96 Pole
- › 18 & 27mm Pitch availability
- › Hybrid & Standard

# Cable Management Solutions

Icotek is a trusted name in cable management, offering split entry frames, cable glands, brush plates, and hygienic solutions. Certified up to IP68 and UL Type 4X on select models, with integrated strain relief to EN 62444. Built for secure, compliant cable routing in industrial, automation, and cleanroom environments.



Up to IP66

## Split Cable Entry Frames

- > Guides, Routes & Seals
- > Suitable for Standard Cables & Pre-terminated Cables
- > Compatible with 1mm-35mm Cable Diameter
- > Specialised Cable Entry Grommets



Up to IP68

## Membrane Cable Entry Plates

- > Compatible with 1.5mm-22mm Cable Diameter
- > Versatile Cable Entry
- > Ensures Secure Installation
- > Snap in or Screw in
- > Guides, Routes & Seals Non-Terminated Cables
- > Accommodates from 3-35 Cables



## Cable Entry with Brush Seal

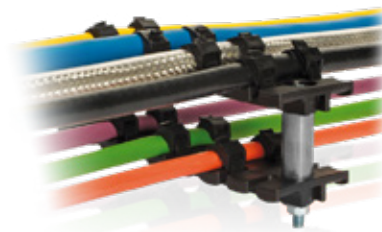
- > Filter & Sealing Protection to Reduce Particle Entry
- > Versatile Among Applications
- > Screw or Snap Fitments



Up to IP68

## Split Cable Glands

- > Guide and re-route Pre-terminated Cables
- > Suitable for Standard Cables & Pre-terminated Cables
- > Screw mount



Up to IP68

## Strain Relief

- > Provides Strain Protection according to EN62444
- > Accommodates Cables With and Without Connectors
- > EMC Shielding Options



Up to IP68

## Hygienic Cable Entry

- > Available for Cable Entry Plates & Frames
- > Smooth & Visible FDA Compliant Design



# Signaling Devices

Auer Signal is a trusted name in industrial signalling, offering beacons, buzzers, alarms, and modular signal towers. Certified to UL, CE, UKCA, and ATEX standards, with IP66–IP69K and IK09 ratings for demanding environments. Built for clarity and durability, Auer solutions deliver the loudest and brightest performance where it counts.



Up to IP68

## Beacons

- > 12-48VAC/DC & 230 VAC options
- > Wide Range of Colours
- > Multi-tone: 32 Tone Sounder
- > Buzzer options
- > Panel & Base Mount options
- > Accessories



Up to IP65

## Buzzers

- > Panel & Base Mount options
- > 65dB-108dB
- > Red & Amber LED options
- > Accessories



Up to IP66

## Alarms

- > 24-48V AC/DC & 110-240VAC options
- > Up to 127dB Adjustable Volume
- > Up to 63 Tone options available
- > Beacon options



Up to IP65

## Signal Towers

- > Steady, Flashing & Multifunctional LED's
- > Different mounting options available
- > Half Dome options available
- > Buzzer options available

## Polycarbonate Enclosures & Terminal Boxes

FIBOX is a trusted name in industrial enclosures, offering polycarbonate, ABS, and aluminium housings for control and wiring protection. ARCA and Euronord series provide IP66/IP67 and IK08–IK10 ratings, with UV resistance and RoHS-compliant materials. Built for durability and flexibility in outdoor, industrial, and automation environments.



IP66

### ARCA

- > FIBOX High-Impact-Resistant Polycarbonate
- > Variety of Sizes and Configurations
- > UV Resistance for Outdoor Applications
- > Variety of Essential Accessories
- > Includes a Mounting Plate



IP66 IP67

### Euronord

- > Variety of Sizes and Configurations
- > High-quality ABS or Polycarbonate options
- > Easy to Machine and Customisable Design



IP66 IP67 IP68

### ALN

- > Powder Coated High-grade Aluminium
- > Corrosion Resistance



### Accessories

- > Inner Doors
- > Din Rail Kits
- > Mounting Brackets

## GRP Enclosures and Fuse Protection

AllBro is a trusted name in GRP enclosures and fuse protection, offering IP66-rated housings for industrial applications. Enclosures are UV-stabilised, flame and chemical resistant, with options for clear or solid doors and DIN-rail kits. High-capacity fuse holders support 1000–1500 VDC operation and DIN mounting for safe, modular installs.



IP66

### GRP Wall Mount Enclosures

- > Solid door or Polycarbonate Window
- > Large Size Range
- > Flame & Chemical Resistant
- > UV Stabilised and Weatherproof
- > Available with Pre-fitted DIN Rail Kit



### Enclosure Accessories

- > Versatile Range to Suit Enclosures
- > Multi-Angled Mounting Brackets
- > Wall and Pole Mount Brackets
- > Device Plates
- > Inner Doors
- > Locks and Handles



### Fuses and Holders

- > High Breaking Capacity
- > Enhanced Safety
- > Easy Installation
- > Wide Range Compatibility
- > 1000/1500VDC
- > 10A/15A/20A
- > DIN Mountable

## Timers and Relays

Broyce Control is a trusted supplier of DIN-rail timers, monitoring relays, and protection devices. Products offer wide voltage support, multiple timing ranges, and IEC/UL compliance. Designed for precision control in automation, HVAC, and power distribution applications.



### Multi-function Timers/Relays

- > Timing Function Options
- > 0.1s–100h Time Range
- > Multiple Supply Voltage Availability
- > DIN Rail Mount Option
- > UL Listed



### Earth-leakage Relays

- > Trip Level Options
- > 0-10 Seconds Time Delay
- > Local & Optional Remote Test/Reset Buttons
- > Wide DIN Rail Housing



### Current Transformer/Toroid

- > 35mm Aperture Diameter
- > Versatile Rated System Voltage
- > 4 Fixing Slots For Surface Mount
- > Available In DIN Rail Mounting Clip/Bracket Accessory



# Ready to Perform Where You Are

## Branch Locations

To ensure fast delivery of products to where you need it, stock is located across our three branch locations in QLD, NSW and VIC.

Metro areas in these states offer 1-2 day delivery or you can use our click-and-collect service.

Simply place your order online and pick up from our local warehouse between 8am - 4pm when you receive our collection notification.

## Order Anytime, Anywhere Online

With our **TROPAC.COM.AU** webstore it's easy order whenever it suits you. Featuring live stock availability and transparent pricing, you can view detailed product information online anytime you need. With easy registration you can also view all your purchase history and invoices.

Our technical customer service team is also available to support you on the phone, **1300 876 722** or via our online chat.

Sunshine  
Coast



Sydney



Melbourne



# Value Added Services

Get it right on the first go and save time with our value-added services. We can deliver our products preassembled and customise our solutions quickly. Our expert technical support ensures that your electrical solutions are safe, secure, and fit for purpose.

## ITS Enclosure Solutions

Extreme weather events can lead to catastrophic losses, such as infrastructure damage, system outages, and communication network failures. You can trust that our products have undergone rigorous testing by certified laboratories and industry experts, ensuring they are ready to stand up against the harshest environmental conditions. Protect your most important assets with enclosure solutions that meet and exceed strict product approval testing requirements.

## Assembly

Be ready to go with TROPAC. We supply electrical products and components fully assembled and quality assured. Engineer your solutions to suit your needs and have them custom-assembled and delivered. On big projects, time is of the essence. Simply wire up our assembled products with your team when they arrive on-site via our fast transport network.

**Faster lead times.**

**Precision cut-outs.**

**Highly cost-effective.**

## TROBOT

Our innovative enclosure modification machine helps you integrate your components faster. Reduce your lead times by modifying our robust enclosures with precision cutouts that meet your distinct needs. TROBOT is the largest and fastest machine of its kind in Australia. Fully customise our enclosures to your specifications with holes cut, tapped, threaded and fittings installed in a matter of moments.



**TROPAC**

**has your back.**

**Technical Sales Support**

1300 876 722

[estimating@tropac.com.au](mailto:estimating@tropac.com.au)

[TROPAC.COM.AU](http://TROPAC.COM.AU)

**Head Office**

**QLD:** 19-27 Fred Chaplin Circuit, Bells Creek QLD 4551

**Branch Locations**

**NSW:** Unit 3/10 George Young St, Auburn NSW 2144

**VIC:** 193 O'Herns Rd, Epping VIC 3076

Version 4.1.0

© Copyright 2024 Tro Pacific Holdings Pty Ltd t/a TROPAC. All rights reserved.